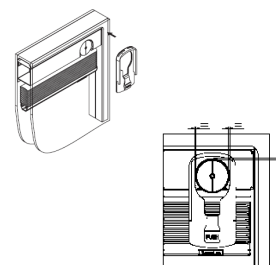


SGG Climaplus® Screen

Mounting guide for external SLIM magnet

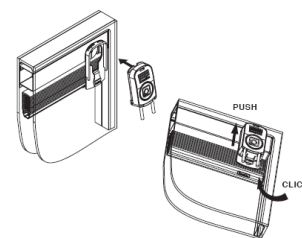
BASE PLATE

1. Carefully clean the area where the base plate has to be mounted. Use suitable detergent. The surface must be completely dry and free of grease before mounting
2. Remove the protective film from the base plate.
3. Stick the self centering base plate to the glass surface so that the cut out in base is perfectly aligned with the internal magnet
4. Pres the base plate firmly to the glass.
5. The base plate is now mounted.



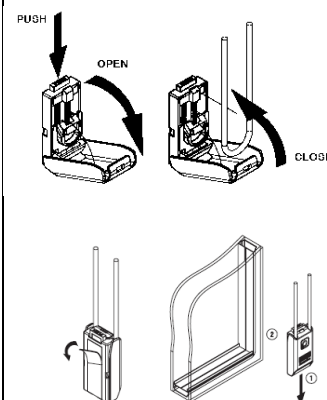
EXTERNAL MAGNET

1. Slide the magnetic housing unit into the self centering base plate.
2. Push the magnetic housing upwards until it is correctly locked, as confirmed by the "click" of the "PUSH" button.
3. The external magnet is now mounted in the base plate.
4. Execute a short test of the magnet.



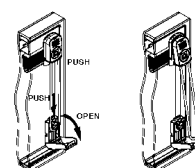
CORD TENSIONER

1. Open the cord tensioner by pressing the "PUSH" button indicated at the top.
2. Position the cord over the tensioner slide, ensuring the cord is not twisted and the spring is not under tension. Close the cover plate.
3. Carefully clean the area where the cord tensioner has to be mounted. Use suitable detergent. The surface must be completely dry and free of grease before mounting.
4. Remove the protective film from the cord tensioner.
5. Tighten the cord slightly - 5 mm – and stick the cord tensioner firmly to the glass.
6. The cord tensioner has to be parallel with the glass edge. Ensure that the cord can be easily removed from the cord tensioner.
7. The cord tensioner is now mounted.



DISMOUNTING THE MAGNET

1. Open the cord tensioner by pressing the "PUSH" button indicated at the top.
2. Remove the cord from the cord tensioner.
3. Release the magnet by pressing the "PUSH" button indicated at the bottom of the base plate.
4. Remove carefully the magnetic housing form from the base plate.



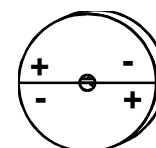
SAFETY

- Although the magnet is designed with an automatic fall device, children may never get in contact with the string loop because of choking hazard.



THE MAGNET PLATES

- The external magnet may never get in contact with other metal surfaces. Should this happen the magnets will be removed from the magnet housing and the magnet's polarity incorrectly positioned.
- For proper assembly, the magnets 2 halves must be positioned for maximum attraction between the magnets. Then place the 2 halves of the magnet in the magnetic housing.
- If incorrect assembled the magnets will repel each other.



IMPORTANT – optimum adhesion

BASEPLATE & CORD TENSIONER, must be unloaded for 24 hours after mounting.